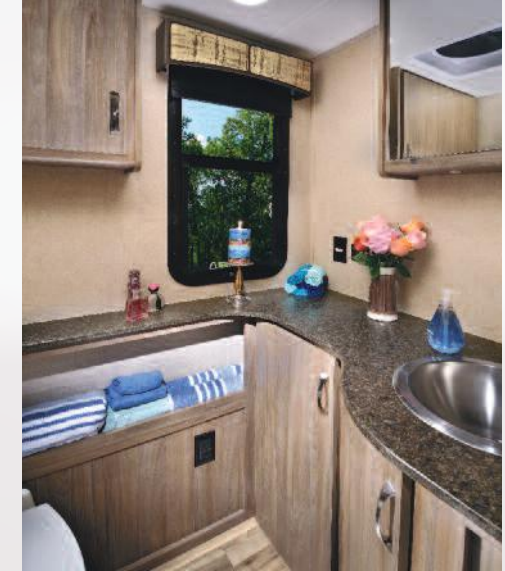


DYNAMAX 
A DIVISION OF FOREST RIVER
DIFFERENT BY DESIGN



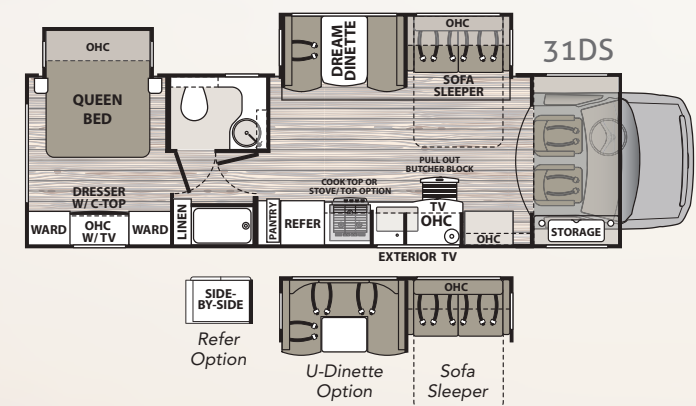
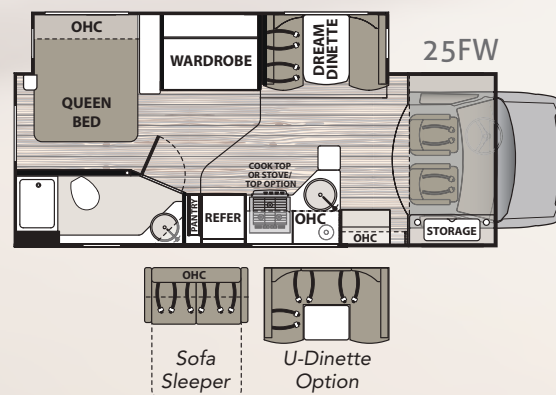
4 SERIES *isata*



| Key Dimensions: | 25FW | 31DS |
|-------------------------|-------------|-------------|
| GVWR | 14,500 lbs. | 14,500 lbs. |
| GCWR | 22,000 lbs. | 22,000 lbs. |
| GAWR – Front | 5,000 lbs. | 5,000 lbs. |
| GAWR – Rear | 9,600 lbs. | 9,600 lbs. |
| Overall Length | 27' 5" | 32' 10" |
| Exterior Width | 101" | 101" |
| Wheelbase | 182" | 223" |
| Overall Exterior Height | 11' 6" | 11' 6" |
| Interior Height | 84" | 84" |
| Fuel Capacity | 55 Gal. | 55 Gal. |
| Water Capacities (Gal.) | | |
| Fresh/Gray/Black | 51/42/42 | 51/42/42 |
| LPG Capacity | 20.3 Gal. | 20.3 Gal. |
| Awning Length | 16' | 16' |

Please refer to the back cover for chart definitions.

31DS with Espresso Décor and Delta Dust Cabinets.



Standard Features & Options

Chassis

- Ford® E450 Chassis
 - 6.8L Triton V10 Gas Engine (305hp/420 ft.-lbs. of Torque)
 - 6-Speed Automatic Transmission with Tow-Haul Mode
 - 55-Gallon Fuel Tank
 - Trailer Hitch (7,500 Tow lbs.) with 7-Way Round Tow Connection
 - Upgraded Hellwig® Rear Sway Bar
 - Exclusive DynaRide® Suspension and Stability Package
 - Momentary Battery Booster Switch for Connecting Chassis and House Batteries
 - Single 12V Chassis Battery
 - LED Brake, Turn, and Backup Lights
 - Aluminum Running Boards
 - Front and Rear Tires: LT215/85 R16
 - Single Front Wheels: Steel (5.5" x 16")
 - Dual Rear Wheels: Steel (5.5" x 16")
 - Valve Extensions
 - 4.56 Rear Axle Ratio
 - Spare Tire with Crank Down Carrier
 - Leatherette Driver and Passenger Seats
 - Backup and Side View Cameras
 - XITE® 6" Touch Screen Dash
 - Infotainment System with AM/FM, Bluetooth®, Sirius/XM® (tuner and antenna), Rand McNally® RV Navigation with Lifetime Updates and Wi-Fi-Connected Services (live fuel, weather, and local search), and Dedicated Camera Button
 - 12V and USB Accessory Ports
 - Cruise Control
 - Adjustable Steering Column
 - Hydrographic Woodgrain Cab Accents
 - Power and Heated Exterior Mirrors
 - Power Windows and Locks
 - 3-Point Seat Belts
 - Front Safety Air Bags
 - Deluxe, Easy-Clean Removable Cab Carpet Mat
 - Drink Holders
- ## Construction
- 1 ½" Aluminum-Framed, Laminated Sidewalls with Block Foam Insulation

- Gel-Coat Fiberglass Walls with Azdel® Backing
- Aluminum-Framed Floor
- Aluminum-Framed Roof Trusses
- Crowned, One-Piece Fiberglass Roof
- Foil-Lined Ductwork Throughout
- Fiberglass Front Cap
- Dark-Tinted, Frameless Windows
- Seamless, Easy-Clean Rotocast Storage Compartments
- Locking Aluminum Exterior Storage Doors
- Electric Slide System

Exterior

- Custom Full Body Paint Package with Diamond Shield® Paint Protection
- Dual-Pitch, Armless Patio Awning with LED Lighting and Motion-Activated Retraction
- Slideout Topper(s)
- LED Patio Light
- Entry Door with Dark-Tinted, Frameless Window and Shade
- Lighted Acrylic Entry Grab Handle
- Lighted Power Entry Step
- Exterior TV (Floor Plan Specific)
- Exterior Speakers
- Rear Ladder
- Front and Rear LED Clearance and Marker Lighting

Interior

- Front Cab-Over Bunk Area with Mattress (50" x 80")
- Premium Vinyl Flooring
- Soft-Touch Padded Vinyl Ceiling
- LED Flush-Mount Ceiling Lighting
- Coordinating Window Treatments with "Quick Change" Fabric Panels
- Blackout Roller Shades
- Italian Ultralight Poplar Cabinetry
- Full Extension, Soft-Closing Drawer Guides (where applicable)
- Hidden Hinges
- 32" LED TV (Living Area)
- Stereo System - AM/FM/CD/DVD with Zoned Speaker Control and Bluetooth® Smart Phone App Control

- Easy Access Battery Compartment Beneath Entry Step
- Lighted Entry with Non-Skid Rubber Step and Steel Risers
- Privacy Curtain for Cab-Over Bunk
- Thermal, Reflective Front Privacy Shades
- USB Charging Ports

Kitchen

- 7.0 cu. ft. 2-Way Refrigerator (Double-Door) with Side Pantry
- Sealed Gas Range with Glass Cover
- Convection Microwave Oven
- Solid Surface Countertops
- Solid Surface Countertop Extension
- Double-Bowl Stainless Steel Sink with Multi-Purpose Slotted Covers
- Under-Cabinet Lighting
- Residential Single-Handle Faucet with Sprayer
- MaxxAir® Power Vent with Built-In Rain Cover and Remote
- Kitchen Trash Can (Floor Plan Specific)

Bedroom

- Queen Bed (60" x 74") with iCool® Gel-Infused Memory Foam Mattress
- Designer Bed Package
- 32" LED TV
- Cedar-Lined Wardrobe
- LED Reading Lights
- USB Charging Ports

Bathroom

- ABS Shower with Light-Weight, Soft-Sided Shower Door
- Shower Skylight
- Oxygenics Body Spa® RV Shower Head
- Foot-Flush Toilet with Hand Sprayer
- Residential Vanity Faucet with Stainless Steel Sink
- MaxxAir® Power Vent with Built-In Rain Cover and Remote

Utilities

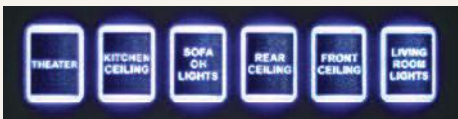
- Dual 12V Group 27 AGM Deep-Cycle, Maintenance-Free Batteries
- Multiplex® Wiring with Touch Screen Command Center, Back-Lit Switch Panels, and Bluetooth® Smart Phone App Control
- 30-Amp Service

- 1,000W Pure Sine Wave Inverter
- 4kW Onan® Gas Generator with Auto Transfer Switch (Mounted on Isolator Pads)
- Roof-Mount and Ducted 15,000-BTU Air Conditioner with Heat Pump
- 35,000-BTU Furnace with Electronic Ignition
- 60,000-BTU Truma® Aqua Go™ On-Demand Water Heater (LP)
- Remote Thermostatically-Controlled Heating and Cooling
- 20.3-Gallon LP Tank (WC)
- LP Quick Connect
- Water Filtration System
- Exterior Digital Monitor Panel with LP/Tank Readout in Service Bay
- Exterior Shower in Service Bay
- Exterior GFCI Receptacle
- Jack® Digital Antenna with LED Signal Strength Indicator
- Cable TV/Satellite Hookup
- 60-Amp Progressive Dynamics Converter with Charge Wizard® System
- Black Tank Flush
- Furnace-Heated Utility Compartment
- Water Management Valve for Fill and Winterizing
- 12V On-Demand Water Pump
- Carbon-Monoxide, LP, and Smoke Detectors
- Fire Extinguisher

Options

- Driver Side Swivel Seat
- Passenger Side Swivel Seat
- Power Driver Seat (N/A with Swivel Seat)
- Automatic, 4-Point Hydraulic Leveling Jacks
- Cab Seat Booster Cushions (Set of Two)
- U-Shape Dinette in Place of Booth Dinette
- 12 Cu. ft. 2-Way Refrigerator with Ice Maker (Floor Plan Specific)
- Oven in Place of Pan Drawer
- Winegard® In-Motion T4 Satellite (Dish® SD-HD, DirecTV® SD, BellTV® SD-HD)
- Solar Panels - Two 100 Watt with 30 Amp Controller

Décor Selections



MULTI-PLEX WIRING SYSTEM

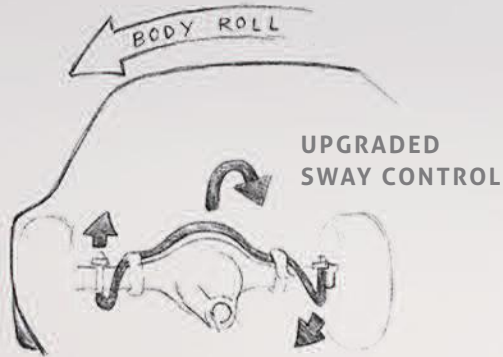
This advanced wiring system has been incorporated in the automotive industry for many years, and requires fewer relays, connections, and wires, reducing potential failure points. Color-coding and a programmable touch screen also makes it easier to troubleshoot if a problem occurs.

Isata 4 Series

Customer Driven – Inside and Out



DynaRide is a Dynamax exclusive suspension package that provides superior handling and performance. Rubber shear springs offer a smoother ride than conventional leaf springs without the worry of air leaks. In addition, our upgraded rear sway bar reduces body roll and improves control in turns.



AIRLESS
RUBBER
SHEAR
SPRING

Paint Selections



PRE-DELIVERY INSPECTION FACILITY

20,000 square feet of quality assurance. The bare essentials for a premium product. This state-of-the-art facility gives immediate daily feedback to production for quality assurance in every unit built.

24/7 EMERGENCY ROADSIDE ASSISTANCE

For a worry-free ownership experience Forest River includes one

Coach-Net®

RV Technical & Roadside Assistance

year of Coach-Net RV Technical & Roadside Assistance with each RV purchase. Whether new to the RV lifestyle or an experienced RV enthusiast, Forest River owners have 24/7 access to technical, operational and emergency road service coverage throughout the US & Canada. Coach-Net's fast, dependable service is just a phone call away.

FREE MEMBERSHIP
to Forest River Owners' Group

www.forestriverfrog.com



CUSTOMER SATISFACTION



www.ForestRiverBuyLocal.com

Your Authorized Isata 4 Dealer



DYNAMAX
A DIVISION OF FOREST RIVER

DIFFERENT BY DESIGN

2745 Northland Dr. ■ Elkhart IN 46514
888-295-7859 ■ www.dynamaxcorp.com

Dynamax Owner "Digital Kit" App

Now you can have your Owner's Manual with you wherever you are. Download our FREE App from the App Store or Google Play and you'll have the information right at your fingertips.



GVWR (Gross Vehicle Weight Rating) - is the maximum permissible weight of the unit when fully loaded. It includes all weights, inclusive of all fluids, occupants, cargo, optional equipment and accessories. For safety and product performance do NOT exceed the GVWR.

GCWR (Gross Combined Weight Rating) - Is the maximum permissible loaded weight of your motor home and any towed trailer or towed vehicle. Actual GCWR of this vehicle may be limited by the sum of the GVWR and the installed hitch receiver maximum capacity rating; see hitch rating label for detail.

GAWR (Gross Axle Weight Rating) - is the maximum permissible weight, including cargo, fluids, optional equipment and accessories that can be safely supported by each axle.

UVW (Unloaded Vehicle Weight)* - is the typical weight of the unit as manufactured at the factory. It includes all weight at the unit's axle(s), including full fuel, all fluids and LP Gas. The UVW does not include cargo, fresh potable water, additional optional equipment or dealer installed accessories.

CCC (Cargo Carrying Capacity)** - is the amount of weight available for fresh potable water, cargo, passengers, additional optional equipment and accessories. CCC is equal to GVWR minus UVW. Available CCC should accommodate fresh potable water (8.3 lbs. per gallon). Before filling the fresh water tank, empty the black and gray tanks to provide for more cargo capacity.

*Estimated Average based on standard build optional equipment. **Estimated average based on standard build optional equipment.

Each Forest River RV is weighed at the manufacturing facility prior to shipping. A label identifying the unloaded vehicle weight of the actual unit and the cargo carrying capacity is applied to every Forest River RV prior to leaving our facilities.

The load capacity of your unit is designated by weight, not by volume, so you cannot necessarily use all available space when loading your unit.

Actual towing capacity is dependent upon your particular loading and towing circumstances, which includes the GVWR, GAWR and GCWR as well as adequate trailer brakes. Please refer to the Operator's Manual of your vehicle for further towing information.

All information contained in this brochure is believed to be accurate at the time of publication. However, during the model year, it may be necessary to make revisions and Forest River, Inc., reserves the right to make all such changes without notice, including prices, colors, materials, equipment and specifications as well as the addition of new models and the discontinuance of models shown in this brochure. Therefore, please consult with your Forest River dealer and confirm the existence of any materials, design or specifications that are material to your purchase decision.

©2017 Dynamax 6/17



Learn More
Scan this barcode using a QR Reader on your smart phone to learn more about Forest River.



A Berkshire Hathaway company.

